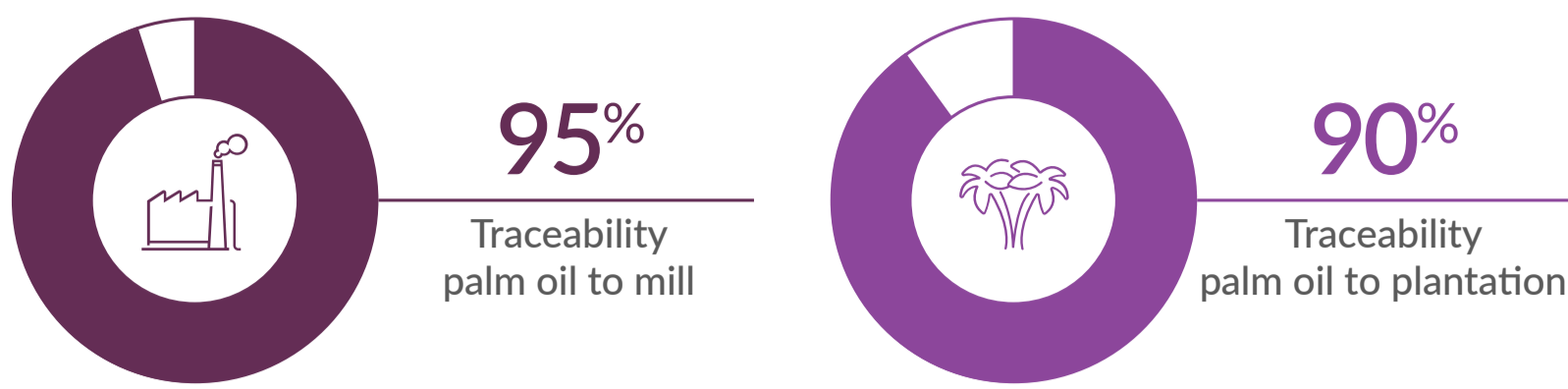


# Palm Oil

\* Numbers from January - December 2022, scores calculated on data availability at cut off time.

## Traceability on global & regional level\*

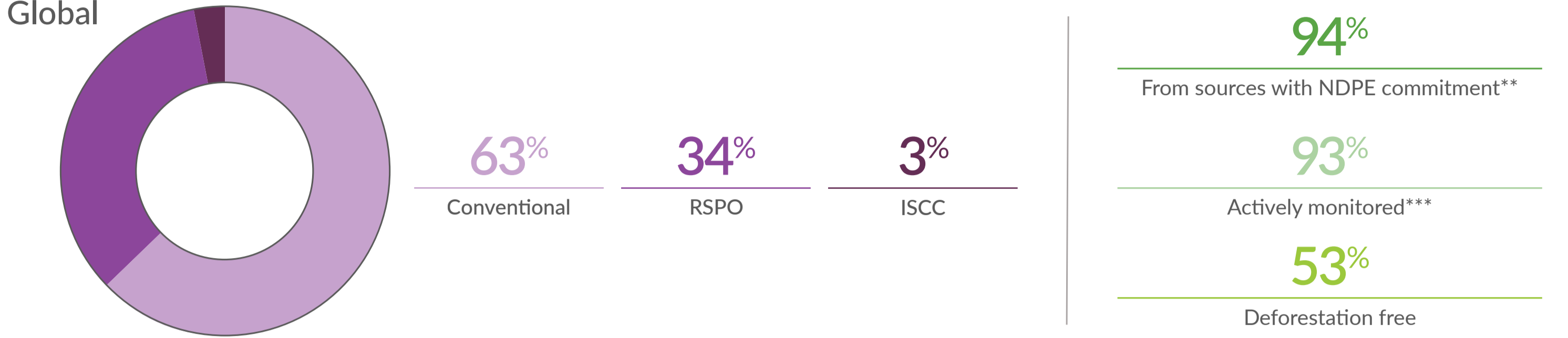
### Global



North America	100% Palm oil to mill	95% Palm oil to plantation
Europe	100% Palm oil to mill	95% Palm oil to plantation
Latin America	99% Palm oil to mill	92% Palm oil to plantation
Asia, Middle East and Africa	84% Palm oil to mill	79% Palm oil to plantation

## Certified volumes sourced (market driven)\*

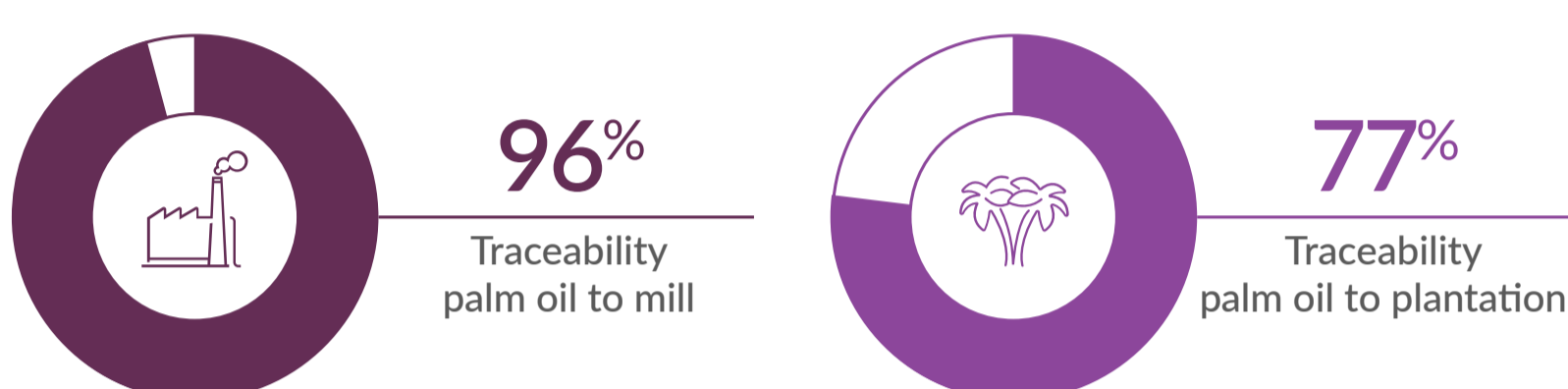
### Global



# Palm Kernel

## Traceability on global & regional level\*

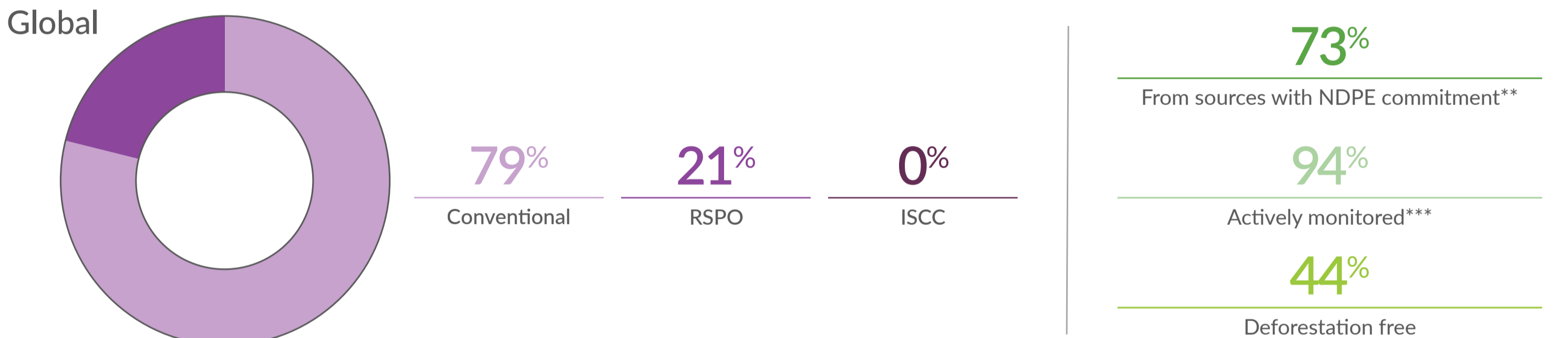
### Global



North America	100% Palm oil to mill	93% Palm oil to plantation
Europe	98% Palm oil to mill	74% Palm oil to plantation
Latin America	100% Palm oil to mill	89% Palm oil to plantation
Asia, Middle East and Africa	92% Palm oil to mill	70% Palm oil to plantation

## Certified volumes sourced (market driven)\*

### Global



\*\* From sources with NDPE commitment equal or stronger to set minimum requirements.  
 \*\*\* Actively Monitored by Satelligence and EarthEqualizer via optical and radar satellites. Reporting of Land Use Change alerts on bi-weekly basis. Includes RSPO IP certified mills.

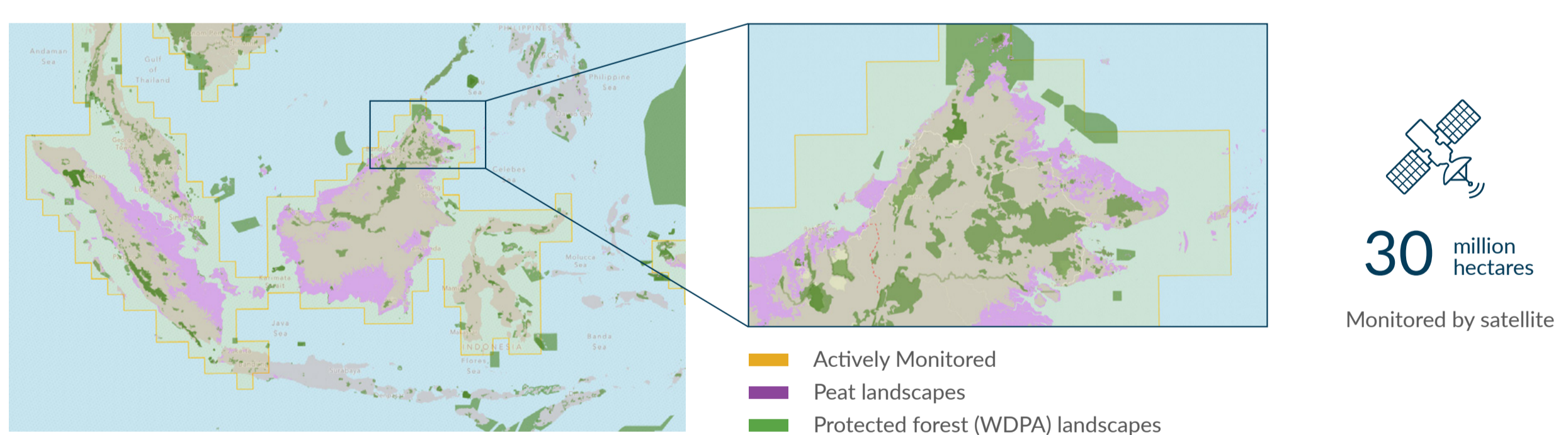
[Click here for NDPE IRF 2022FY refinery profiles](#)

## Verification\*

Since the end of 2017 we have actively monitored Peninsula and Sabah in Malaysia using satellites.

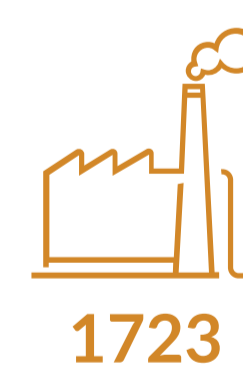
- On a bi-weekly basis we check an area of 30 Million hectares for land use change by analyzing near real time satellite images.
- Using our powerful GIS platform combining forest and peat maps with the latest Sentinel-2 images, we are actionable on alerts and we follow up with suppliers and stakeholders if necessary.

You can find more details on the way we expand the monitored area [here](#).



## Transparency

We commit to transparency in every action we take and every report we provide. You can find our way of calculating the figures shown in this dashboard in this [protocol](#).



70 Direct Sourcing  
1653 Indirect Sourcing

## Mill lists

