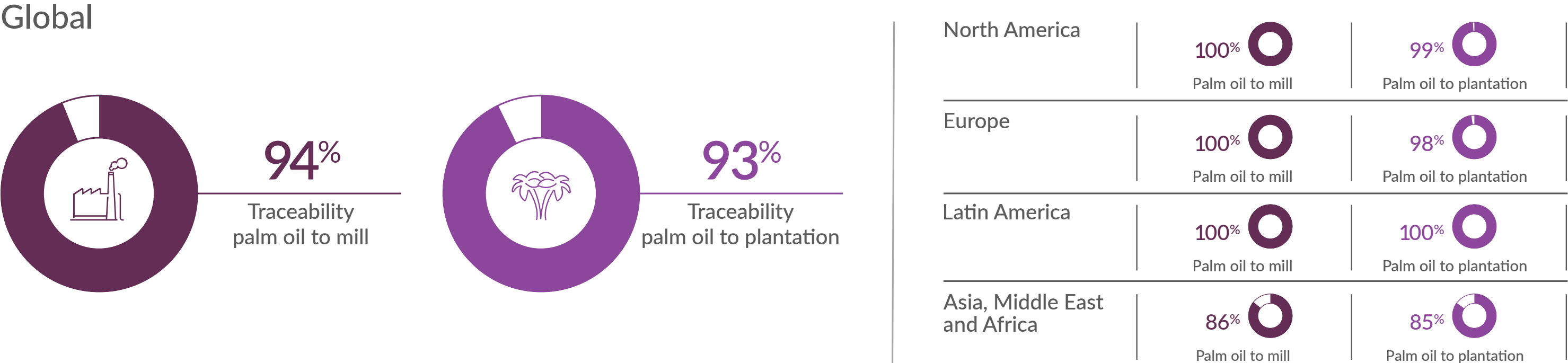
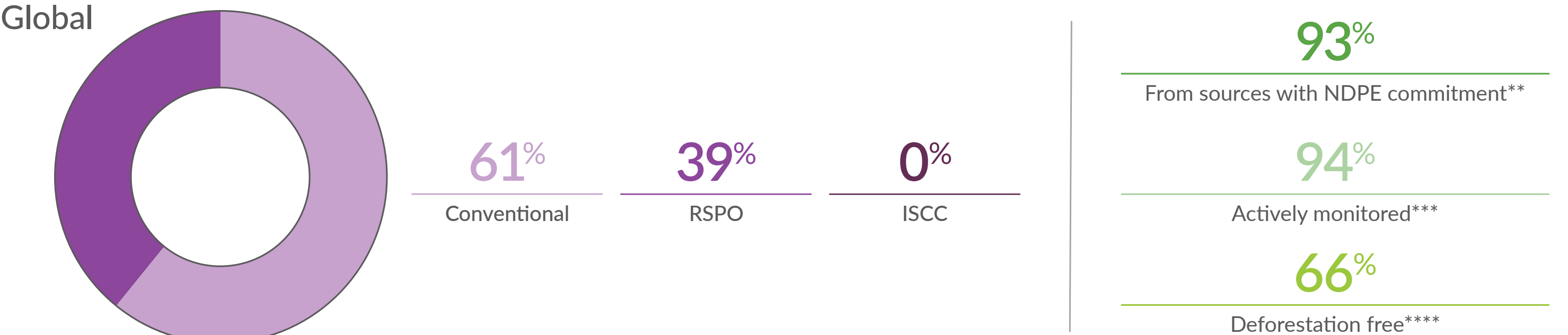


Palm Oil

Traceability on global & regional level*

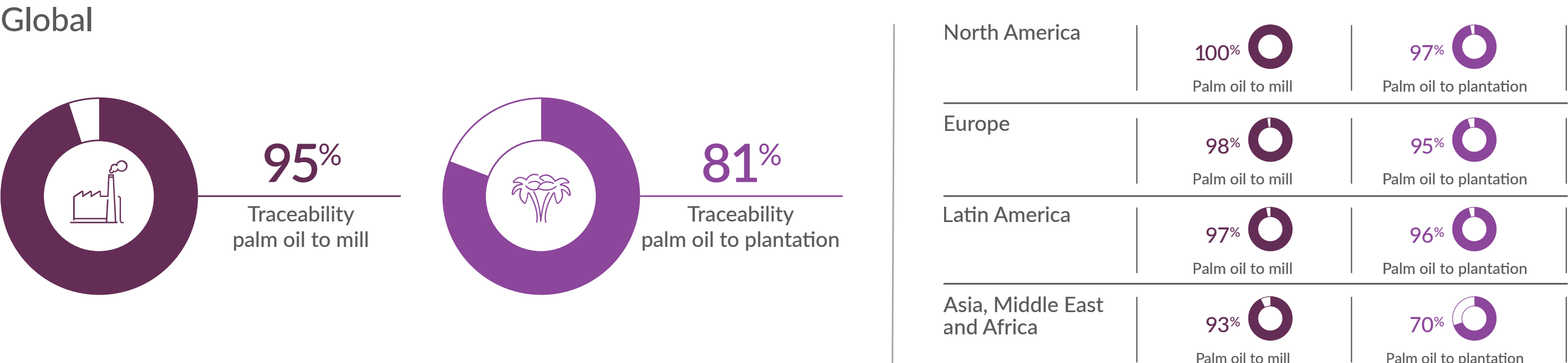


Certified volumes sourced (market driven)*

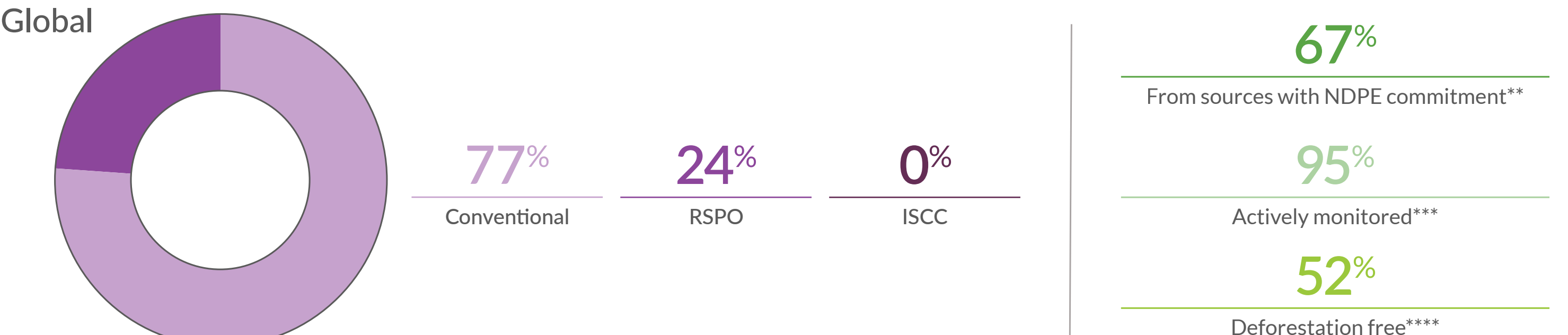


Palm Kernel

Traceability on global & regional level*



Certified volumes sourced (market driven)*



** From sources with NDPE commitment equal or stronger to set minimum requirements.

*** Actively Monitored by Satelligence and EarthEqualizer via optical and radar satellites. Reporting of Land Use Change alerts on bi-weekly basis. Includes RSPO IP certified mills.

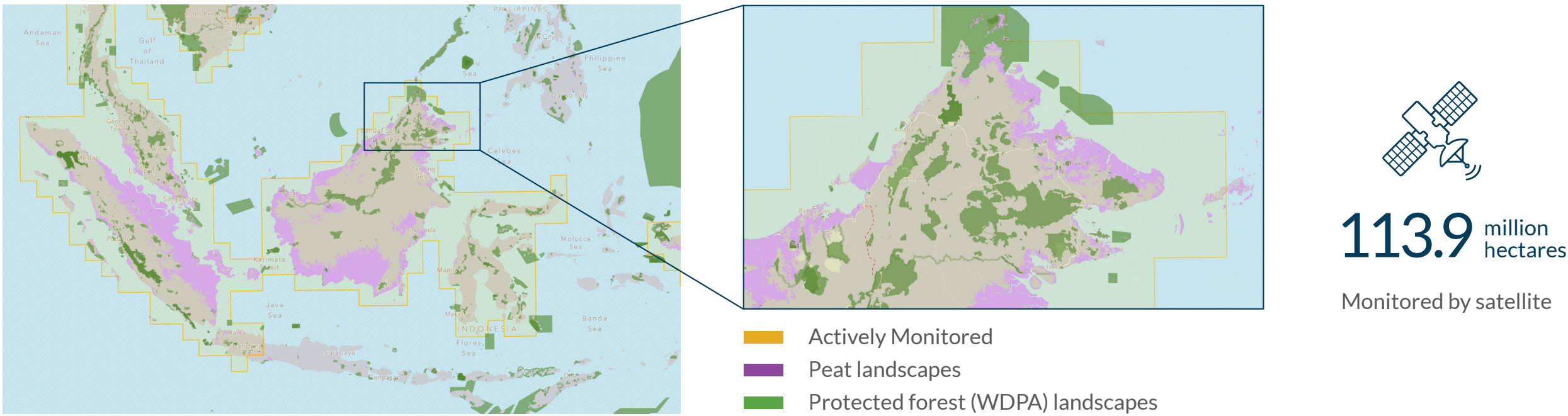
**** Deforestation Free equals ‘delivering’ under the [NDPE IRF method](#).

Verification*

Since the end of 2017 we have actively monitored Peninsula and Sabah in Malaysia using satellites.

- On a bi-weekly basis we check an area of 30 Million hectares for land use change by analyzing near real time satellite images.
- Using our powerful GIS platform combining forest and peat maps with the latest Sentinel-2 images, we are actionable on alerts and we follow up with suppliers and stakeholders if necessary.

You can find more details on the way we expand the monitored area [here](#).



Transparency

We commit to transparency in every action we take and every report we provide. You can find our way of calculating the figures shown in this dashboard in this [protocol](#).

